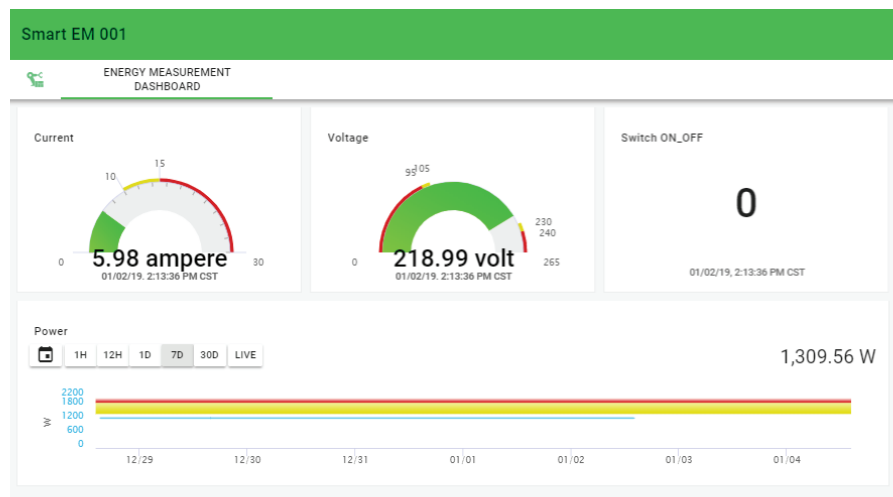


Smart Plug Solution



Overview

Changing the Smart Plug from Wi-Fi to NB-IoT removes connectivity limitations, enabling the monitoring of different appliances or equipment in public areas. In addition to its monitoring function, data will be recorded and stored in the cloud portal. Through proper data training, predictions of potential machine failure can be made via the intelligent cloud.

Features

- Key power parameter measurement (voltage, current, power quality)
- Energy monitoring
- Real-time reporting
- Accumulated power consumption reporting
- *Scheduling on/off function for devices
- Measurement history reporting
- Alert for different abnormal power consumption cases

Systems

- Energy measurement sensor
- NB-IoT module

Target Applications

- Energy monitoring
- Predictive maintenance



Cloud Portal Access
Password: **avnet**